

# FloCheck Inyeccion

## Effective treatments in AICD wells

La inyección FloCheck de Tendeka es una tecnología para el tratamiento del espacio anular de completación y cerca de los pozo en pozos completados con tecnologías de control de Inflow.

Inflow Control Devices (ICD) can provide great improvements in inflow performance in horizontal wells. Their check valve functionality is beneficial during deployment to enable effective circulation of well fluids, and during production to prevent cross-flow between zones. To enable the AICD to be bypassed if chemical treatment of the annulus or near wellbore is required, FloCheck Injection can be deployed to allow higher rate treatments to be performed.

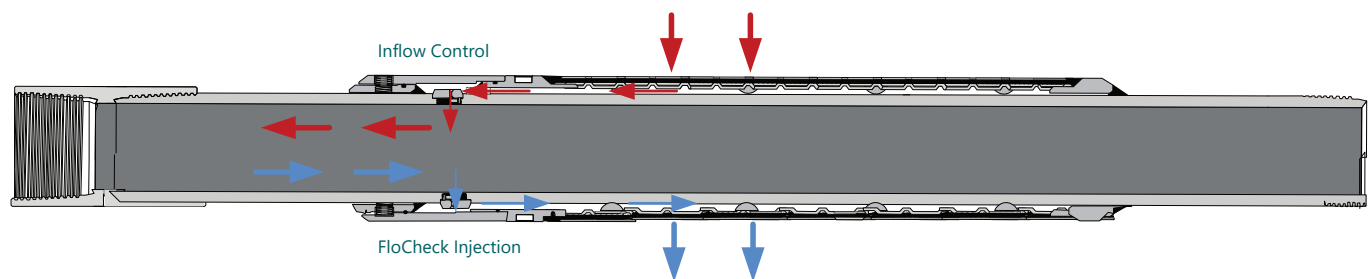
FloCheck Injection is deployed within the AICD housing to enable treatment of the screen and annulus. The devices can be run per joint, per zone, or in multiples within a single joint dependent on the rate or placement requirements. The FloCheck Injection valve is designed for use with a wide range of fluids including acids and gas, making it very adaptable for well control.

### Features

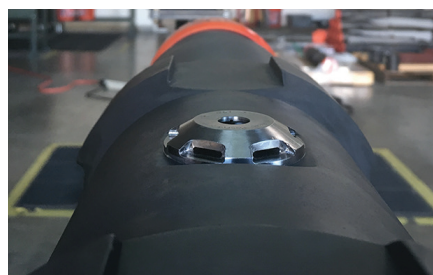
- Based on field proven AICD design and materials
- Bias closed with an adjustable spring force, the BPV is further activated by AICD pressure drop during production.

### Benefits

- Improved well performance
- Adaptable for well control
- Interchangeable with AICD for field flexibility
- Allows bypass of the AICD for chemical treatments



FloCheck Injection assembled within ICD housing



## Technical Specifications

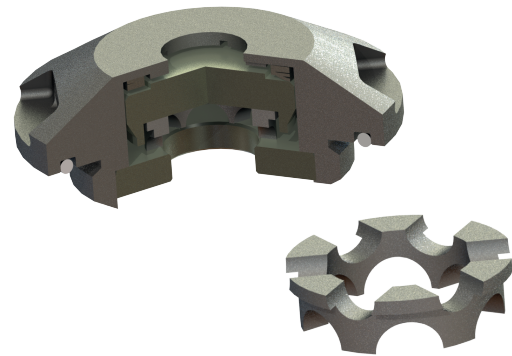
Nozzle size equivalent	10mm	15mm
Design Conditions		
Absolute pressure	4000psi	
Differential pressure	435psi	
Differential opening pressure	40-435psi	
Maximum liquid rate	6.5 gpm/BPV	10 gpm/BPV
Maximum gas lift rate	0.5 mmscf/day	0.63 mmscf/day
Materials		
Housing	Alloy 718	
Seal area	Tungsten carbide	
Spring	Incoloy	

# FloCheck Injection GP

## Inflow-enabled gravel pack

Our FloCheck Injection GP enables standard gravel packing operations to be performed with inflow control devices in the completion without significant additional cost, complexity or compromise. Dissolvable magnesium is utilised with a spring-loaded valve located within the ICD housing to provide a high flow area path from the annulus to the tubing during completion operations.

Following completion of gravel packing operations, the magnesium element is dissolved, allowing the spring-loaded valve to close and all production inflow to pass through the ICD.



Specification	Valve	Comment
<b>Physical dimensions</b>		
Max OD	1.76"	Interchange-able with FloSure
Height	0.356"	Above basepipe OD
Thread	M33 x 2.0	
Min flow area	79mm <sup>2</sup>	Equivalent to 10mm diameter
<b>Materials</b>		
Production wetted	Alloy 718/TC	
Spring	17/7 PH SS	
Elastomers	Viton	Static o-ring seal on valve housing
<b>Design conditions</b>		
Temperature		Seal or spring limited
Diff. pressure	725psi	Max FloSure operating pressure
Diff. opening pressure	70-435psi	Spring adjustable
Leak rate	0.02kg/hr	At max differential pressure
Design life	20 years	
Number of cycles	40	2 treatments per year
Max liquid rate	0.158bpm	
Total fluid	1,500bbl	4 hours injection at 225bpd/device